

INSTRUCTION MANUAL

SPRING BALANCER

EWA-22

EWA-30

EWA-40

EWA-50

EWA-60

EWA-70



WARNING

- Read this manual before use.
- Keep this manual available.

ENDO KOGYO CO., LTD

Copyright and liabilities

The copyright for this manual belongs to Endo Kogyo Co., Ltd.

The manual is provided for the limited purpose of supporting the safe and proper use of the product. It cannot be used for other purposes.

The customer may not use or make copies of this manual, in whole or in part, outside of this purpose without receiving prior consent from Endo Kogyo Co., Ltd.

The customer is also prohibited from translating or modifying the content of the manual, in whole or in part.


The content described in the manual is subject to change without advance notice.

Please note this in advance.

November 2019 ENDO KOGYO CO., LTD.

SAFETY ALERT SYMBOL AND ALERT SIGNS

Please read this manual carefully and follow its instructions.

The SAFETY ALERT SYMBOL (), WARNING, CAUTION, and NOTE carry special messages.



This SAFETY ALERT SYMBOL is used to call your attention to items or operations that could be dangerous to you or other persons using this equipment.

Please read these messages and follow these instructions carefully.



WARNING : WARNING indicates a hazardous situation which, if not avoided, could result in death or serious injury.




CAUTION : CAUTION indicates a hazardous situation which, if not avoided, could result in minor or moderate injury, damage or destruction of the equipment and others.

NOTE : NOTE indicates a special instruction in operation or maintenance.

Scope of warranty and liabilities for the equipment

1. We will repair or replace the product free of charge if a failure due to manufacturing defects occurs under proper usage during the warranty period.
For details, contact us or your dealer.
2. The warranty will be void in the following cases:
 - 1) Change in ownership.
 - 2) Repair, adjustment, or modification performed by a party other than the manufacturer, agents, or dealers.
3. Warranty period is 1 year from your purchase.
However, wire rope, wire guide and spring are not covered by warranty.
4. Repairs applicable to any of the following shall be charged even during the warranty period:
 - 1) Failure/damage caused by incorrect use.
 - 2) Failure/damage caused by use of non-genuine parts.
 - 3) Failure/damage caused by fire, earthquake, natural disaster, or other unexpected incident.
 - 4) Incident caused by fall, shock, negligence, or by inadequate storage.
 - 5) Failure/damage caused by use of parts or other equipment that are not included in this product.
 - 6) Replacement of consumables.
 - 7) Usage in violation of dangers or cautions stipulated in this Instruction Manual or the warning labels.
 - 8) Failure/damage caused by any reason that is not attributable to the manufacturer.
5. Warranty exclusions such as opportunity loss.
Either during or after the warranty period, opportunity loss, damage to anything other than our product(s), or other duties incurred on you/your customer as a result of the failure of our product(s) are outside the scope of the warranty.

Contents

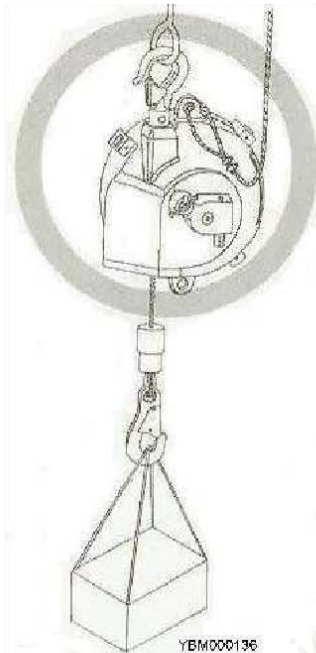
1.  Safety instructions	2
2. Description of product	3
2-1. Specifications	
2-2. Main features	
3. Installation	3
3-1. Balancer installation	
3-2. Tool/device attachment and spring tension adjustment	
3-3. Working stroke (cable travel) check	
4. Use	5
4-1. Safety instructions on use	
4-2. Drum lock operation	
4-3. Tool/device replacement	
5. Troubleshooting	8
5-1. Common malfunctions and their causes	
5-2. Solutions	
6. Inspections	12
7. Wire rope replacement	13
8. Spring replacement	14
9. Wire guide replacement	16
10. Parts list	17
EWA-22, EWA-30	17
EWA-40, EWA-50	19
EWA-60, EWA-70	21

1. Safety instructions

WARNING

Incorrect use of the spring balancer could cause personal injury. Observe instructions in the manual and use the balancer correctly.

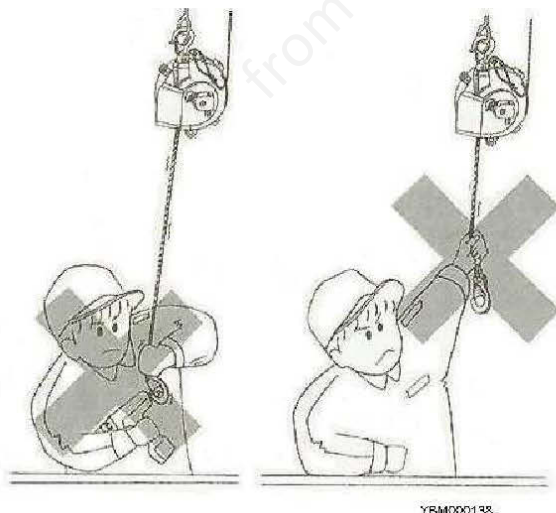
- Install the balancer correctly.
- Always attach a secondary Support cable or chain.



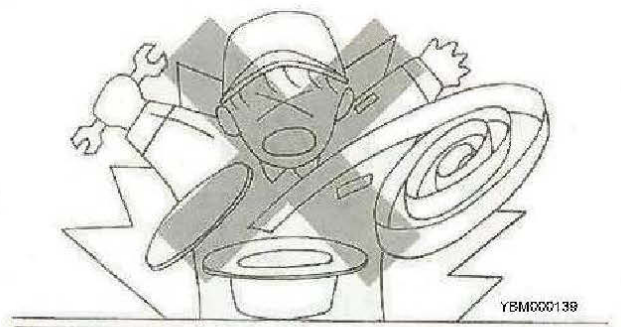
- Never stand under the suspended tool/device.



- Never remove tool/device while the wire rope is extended.
- Never pull the wire rope when unloaded. Never release the drum lock when unloaded.



- Never remove the spring from the spring case.



- Never alter the balancer.
- Periodically inspect the balancer.

2. Description of product

2-1. Specifications

Model	Capacity range (kg)	Cable travel (m)	Mass (kg)
EWA-22	15.0 ~ 22.0	1.5	8.9
EWA-30	22.0 ~ 30.0	1.5	9.3
EWA-40	30.0 ~ 40.0	1.5	11.9
EWA-50	40.0 ~ 50.0	1.5	12.3
EWA-60	50.0 ~ 60.0	1.5	13.3
EWA-70	60.0 ~ 70.0	1.5	13.6

Working conditions Application area : Indoor and normal atmospheric conditions
Temperature range : -10℃ to +50℃

2-2. Main features

■ Fall prevention device

A mechanism to prevent the suspended tool/device from falling to the maximum cable travel in case of spring breakage. When the spring breaks, the safety pin pops out from the spring case and collides with one of the pins, which are fixed on the casing, to stop the drum rotating.

This mechanism can not prevent the tool/device from falling at all when the spring breaks.

■ Drum lock (See Chapter 4-2 "Drum lock operation")

A mechanism to lock the drum every 1/6 turns. This mechanism is used when removing the suspended tool/device (see Chapter 4-3) or replacing the wire rope (see Chapter 7) or replacing the wire guide (see Chapter 9).

■ A snap back arrest device

This device is provided to arrest Wire rope snap back in case that a Wire rope is cut or a suspended tool is disengaged. As soon as a Wire rope is cut, a drum revolves rapidly winding a Wire rope up. The centrifugal force makes a Ratchet on a spring case pushed out and the ratchet sticks in a wheel fixed on a cover, stopping the revolution of the drum.

This is not engineered to keep the machine away from Wire rope snap back in advance.

The device is only for emerglncy. Never use the device for another purpose such as the replacement of tools etc.

3. Installation

3-1. Balancer installation



WARNING

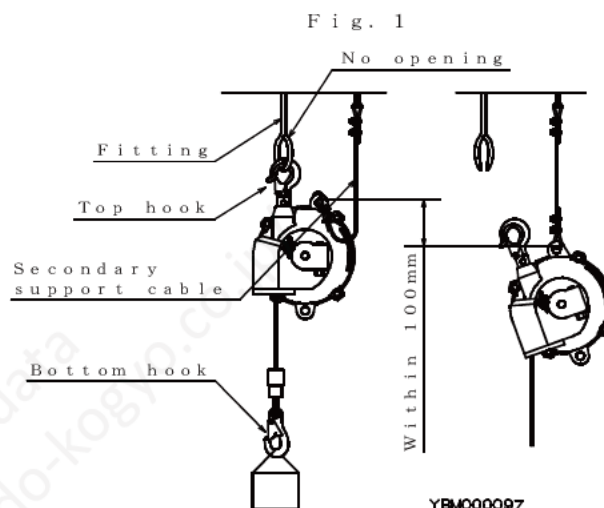
● Install the balancer correctly.

Incorrect installation could cause personal injury or damage to the balancer or other equipment.

● Always attach a secondary support cable or chain.

It is required to protect personal in case of failure of the top hook or the fitting.

- 1) Prepare a fitting that can support at least 10 times the maximum capacity of the balancer.
NOTE: The fitting must have no opening as shown in Fig. 1 to prevent the balancer from disengaging when it swings.
- 2) Attach the top hook of the balancer directly to the fitting. Check the latch is closed.
NOTE: Take care the balancer does not hit surrounding objects. Make the mounting height different for each balancer to avoid collision.
- 3) Check the top hook can swivel freely.
NOTE: Do not fasten the top hook to the balancer body.
- 4) Prepare a secondary support cable or chain that can support at least 10 times the maximum capacity of the balancer.
- 5) As shown in Fig. 1, attach an end of the secondary support cable or chain to balancer body, and attach the other end to a separate fitting which does not support the balancer.
NOTE: Leave some slack in the secondary support cable or chain to allow the balancer to rotate freely. The slack must be a suitable length so that the balancer will stop within 100mm when falling in case of failure of the top hook or the fitting (see Fig. 1).



3-2. Tool/device attachment and spring tension adjustment



WARNING

Never pull the wire rope when unloaded.
 If the wire rope is released when extended with no load, it will snap back and could cause personal injury.
 Wire rope snap back protection is not equipped to make an dangerous work available, such as pulling out Wire rope without a load.



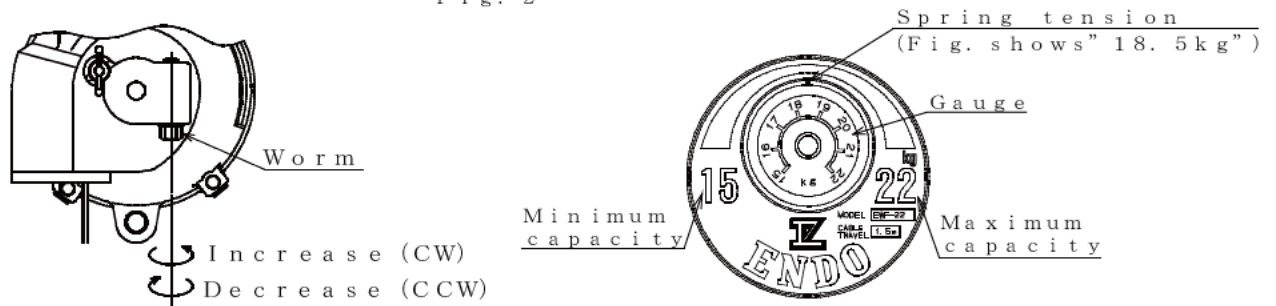
CAUTION

If the spring tension is set over the maximum capacity, the balancer can not provide the specified cable travel and the spring life will be shortened.
 If the spring tension is set under the minimum capacity, the fall prevention device will operate and stop the suspended tool/device.

- 1) Before attaching, check the mass (weight) of the complete Tool/device, including all accessories, is within the capacity range of the balancer.
- 2) While watching the gauge, preadjust the spring tension to the mass of the complete tool/device by turning the worm with a wrench etc. Turn clockwise for increasing the spring tension, turn counterclockwise for reducing.
 The gauge shows the approximate spring tension (see Fig. 2).

- 3) Lift the complete tool/device up to the bottom hook and attach it.
Never pull the wire rope down to the tool/device.
 - 4) After attaching the complete tool/device, adjust the spring tension again and check tool/device is balanced.
- NOTE:** Over tensioning could cause damage to the balancer body or the wire rope.

Fig. 2



3-3. Working stroke (cable travel) check



CAUTION

Extending the wire rope past the maximum cable travel could cause damage to the balancer.

- 1) Check the cable travel is long enough for the application.
- 2) If necessary, lower the mounting height of the balancer or insert a suitable fitting between the bottom hook and tool/device.

4. Use

4-1. Safety instructions on use



WARNING

- Never remove tool/device from the bottom hook while the wire rope is extended.
- Never stand under the suspended tool/device.
- The device is only for emergency. Never use the device for another purpose such as the replacement of tools etc.
- Never alter the balancer.



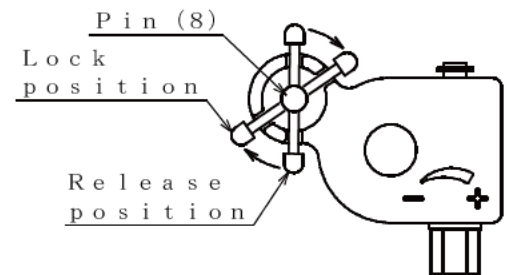
CAUTION

- Always use within the capacity range of the balancer.
- Always adjust the spring tension before use.
- Do not extend the wire rope past the maximum cable travel.
- Do not pull the wire rope at an angle.

Fig. 3

4-2. Drum lock operation

- 1) Pull Pin (8) out and turn it clockwise to place in the lock position (see Fig. 3).
- 2) Move the suspended tool/device upward or downward until Pin (8) enters the slot/hole in the drum and the drum becomes locked.
- 3) Move the tool/device again to check the drum is locked securely.
- 4) Remove the tool/device from the bottom hook.



WARNING

Never remove the suspended tool/device before checking the drum is locked securely.
If the drum is not locked securely, the drum lock could be released allowing the wire rope to snap back, possibly causing personal injury.
Drum lock check is very important factor for safety.
Never fail verify the sufficient drum lock.

- 5) Before releasing the drum lock, attach a new tool/device if the old one has been removed.
The new tool/device must have almost the same mass (weight) as the old one.
- 6) Release the drum lock by pulling Pin (8) out.
Turn Pin (8) counterclockwise and place it in the release position.



WARNING

- Never release the drum lock when the balancer is unloaded or the new tool/device has a different mass (weight) to the old one. If released, the wire rope will snap back or the tool/device could drop down respectively, possibly causing personal injury.
- Always release the drum lock after arranging the tension of spring suspending a tool. This is important factor for safety. Never fail to abide by the procedure instructed in the manual.

4-3. Tool/device replacement

■Method 1 - With drum lock actuated.

- 1) Lock the drum according to Chapter 4-2 "Drum lock operation".
Remove the suspended tool/device.



WARNING

Move the tool/device upward and downward to check the drum is locked securely. Never remove the tool/device before checking this. If the drum is not locked securely, the drum lock could be released allowing the wire rope to snap back possibly causing personal injury.

Drum lock check is very important factor for safety. Never fail to verify the sufficient drum lock.

- 2) Before attaching, check the mass (weight) of the new complete tool/device, including all accessories, is within the capacity range of the balancer.
- 3) While watching the gauge, preadjust the spring tension to the mass of the new complete tool/device by turning the worm with a wrench etc.
Turn clockwise for increasing the spring tension, turn counterclockwise for reducing.
The gauge shows the approximate spring tension (see Fig. 2).
- 4) Attach the new complete tool/device to the bottom hook.
Release the drum lock.



WARNING

- Never release the drum lock when the balancer is unloaded, or if the new tool/device has a different (weight) to the old one, before readjusting the spring tension.
If released, the wire rope will snap back or the tool/device could drop down respectively, possibly causing personal injury.
- Always release the drum lock after arranging the tension of spring suspending a tool. This is important factor for safety.
Never fail abide by the procedure instructed in the manual.

- 5) After attaching the new complete tool/device and releasing the drum lock, adjust the spring tension again and check the tool/device is balanced.
NOTE: Over tensioning could cause damage to the balancer body or the wire rope.

■ Method 2 – Without drum lock actuated.



WARNING

Never remove the suspended tool/device while the wire rope is extended.

If removed, the wire rope will snap back and could cause personal injury.

- 1) Lift then remove the suspended tool/device when the wire rope is fully retracted.
- 2) Attach a new tool/device according to Chapter 3-2
"Tool/device attachment and spring tension adjustment".

5. Troubleshooting



WARNING

- If a malfunction occurs during operation, stop operation immediately and take the necessary steps to rectify the problem.
- Never remove the suspended tool/device before identifying causes of the malfunction. If removed, the wire rope will snap back and could cause personal injury. Never take off a tool suspended to make the work safe. Wire rope snap back protection is for only emergency.

5-1. Common malfunctions and their causes

Malfunction	Cause	Solution
● Wire rope can not be pulled out or retracted.	<ul style="list-style-type: none"> ● Drum lock is engaged. ● Fall prevention device is engaged because the spring tension is set under the maximum capacity. ● Wire rope has slipped off from the drum groove and is caught between drum and casing. ● Spring has broken. 	<ul style="list-style-type: none"> ● Release drum lock. See Chapter 4-2. ● Release fall prevention device. See Chapter 5-2. ● Return wire rope to the drum groove. See Chapter 5-2. ● Replace spring. See chapter 8.
● Wire rope can not be retrieved.	<ul style="list-style-type: none"> ● Wire rope snap back protection actuated. ● Wire rope has slipped off from the drum groove and is caught between drum and casing. 	<ul style="list-style-type: none"> ● Release the Wire rope snap back protection. See Chapter 5-2. ● Return wire rope to the drum groove. See Chapter 5-2.

Contact your dealer or us if a malfunction not listed above occurs.
5-2. Solutions (Refer to the disassembly drawings on pages 17, 19 and 21)



CAUTION

Careless repairs can cause personal injury or damage to the balancer. Therefore, be careful but thorough when making repairs.

- When the fall prevention device has engaged because the spring tension is set under the minimum capacity (see Fig. 4)
 - 1) Move the suspended tool/device upward and downward by hand. The tool/device can be moved about 70 to 140 mm. If the tool/device rises after being lowered and then released, turn Worm (52) counterclockwise until the tool/device starts dropping down. If the tool/device drops down after being lifted and then released, turn Worm clockwise until the tool/device starts rising.

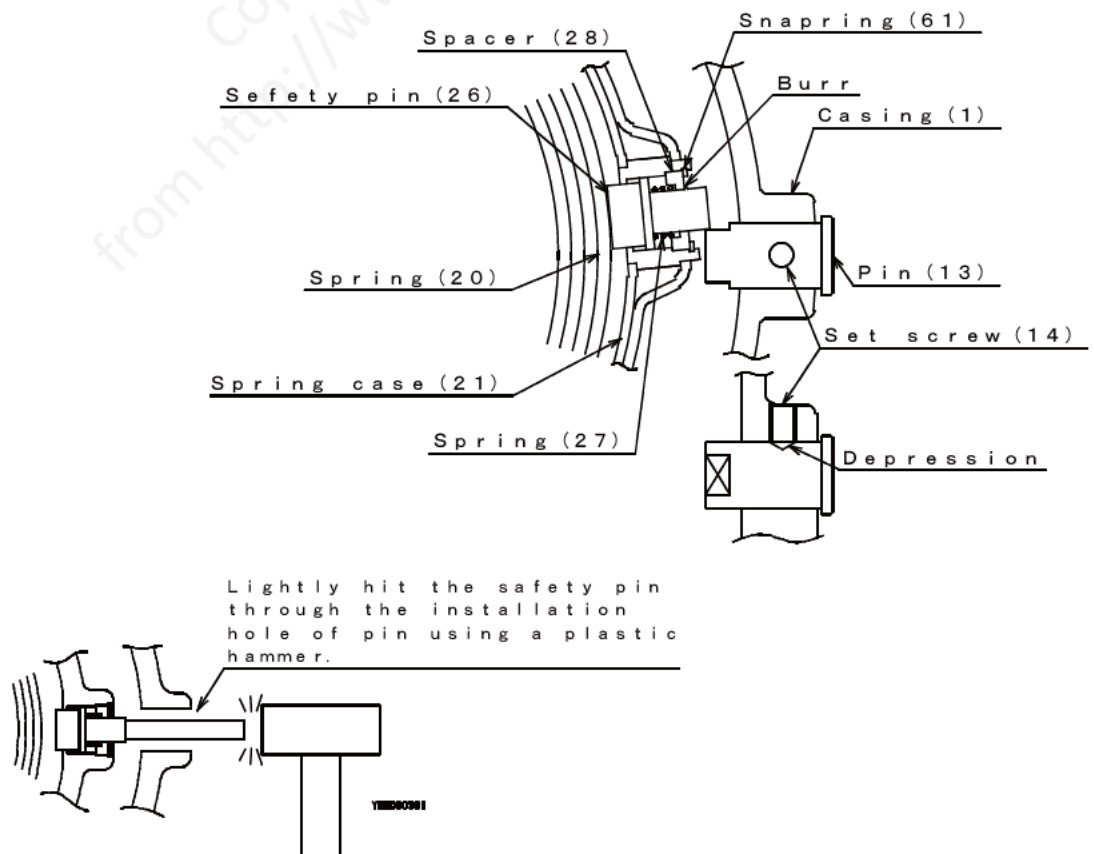
- 2) Remove Wire guide (55), (56) from Casing (1).
- 3) Loosen Set screws (14), and remove all Pins (13) while holding the tool/device by hand.
NOTE: For safety reasons, perform this work with two persons.
- 4) Lift then remove the tool/device from bottom Hook (42) when wire rope (40) is fully retracted into Drum (19).
 Check the mass (weight) of removed tool/device is within the capacity range of the balancer.
- 5) Attach a weight, which has been confirmed that the weight is within the capacity range, to bottom Hook (42) and adjust the spring tension.
- 6) Move the tool/device upward or downward so that Safety pin (26) appears at the hole for Pin (13).
- 7) Check Safety pin (26) does not project out from the surface of Spacer (28). If protruding, lightly tap the top of Safety pin with a Bar having 5mm dia.
- 8) If Safety pin does not return, it has burrs or Spring (27) is broken. Remove Spacer (28) after releasing Spring case (21) from Casing (1) according to chapter 8 "Spring replacement", 1) B-9). Spring (27) pops out when Spacer (28) is removed, therefore be careful not to lose it.
- 9) Make reassemble procedure according to chapter 8 "Spring replacement", 13)-18).



WARNING

If installation of Safety pin (26) or pins (13) is incorrect or missed, the fall prevention device will not operate in case of spring breakage, causing personal injury or damage to equipment.

Fig. 4



■When the wire rope is caught between drum and casing

- 1) Release Wire rope (40) by jerking it strongly while the tool/device is suspended.
NOTE: After jerking, check wire rope and replace if damaged.
- 2) If Wire rope can not be released by jerking, disassembly is required. Remove Retaining ring (58) from worm (52).
- 3) Release all spring tension by turning Worm (52) counterclockwise, and remove Worm.
- 4) Remove the tool/device from bottom Hook (42), and remove the balancer from the fitting.
- 5) Remove Wire guide (55), (56) from Casing (1).
- 6) Loosen Set screws (14), and remove all Pins (13).
- 7) Remove Gauge (53).
- 8) Loosen Hex. head bolts (39), and remove Cover (35).
- 9) Return Wire rope (40) to the groove of Drum (19).
NOTE: Check wire rope (40) and replace if damaged.
- 10) Install Cover (35).
- 11) Install Hex. head bolts (39).
- 12) Install Worm (52), and attach Retaining ring (58).
- 13) Adjust the spring tension, and install Gauge (53), Pins (13), wire guide (55) and (56). See Chapter 8 "Spring replacement", 13) - 18).

■In case that the Wire rope snap back protection has actuated by sudden retrieve.

- 1) Pull out Wire rope (40) and release Ratchet (29), suspending a tool.



WARNING

Never take off a suspended tool when Wire rope snap back protection has actuated.

Release of Wire rope snap back protection may cause a serious danger, retrieving cable rapidly if it has performed without a tool suspended.

Wire rope pulling out on recovery work will release Wire rope snap back protection, causing personnel injury.

Wire rope will be retrieved about 20-80mm rapidly.

- 2) If Ratchet is not released despite cable pulls out enough, Lock the drum according to Chapter 4-2 Drum lock operation.
- 3) Remove Retaining ring (58) from Worm (52) after checking the sure lock of drum.
- 4) Release all spring tension by turning Worm (52) counterclockwise, and remove Worm.
- 5) Remove the tool/device from bottom (42), and remove the balancer from the fitting.
- 6) Remove Wire guide (55), (56) from Casing (1).
- 7) Loosen Set screws (14), and remove all Pins (13).
- 8) Remove Gauge (53).
- 9) Loosen Hex. head bolts (39), and remove Cover (35).
NOTE: Replace Wheel (37), Ratchet (29), Spring (34) etc. If they has been damaged.
- 10) Install Cover (35).
- 11) Install Hex. head bolts (39).

- 1 2) Install Worm (52), and attach Retaining ring (58).
- 1 3) Adjust the spring tension, and install Gauge (53)、 Pins (13)、 wire guide (55) and (56). See Chapter 8 "Spring replacement", 13) -18).

■ In case that Snap back protection has actuated due to wire rope cut etc.



WARNING

If Snap back protection has actuated due to Wire rope cut etc. Stop operation at once and perform proper solution. Wire rope will be retrieved suddenly. causing injury of personal in case that the damaged Wire rope is pulled out or machine receives excessive shock. Wire rope pulling out or excessive shock to the Balancer will release Wire rope snap back protection. causing personnel injury. Wire rope will be retrieved about 20-80mm rapidly.

- 1) Lock Drum according to Chapter 4-2 [Drum lock operation]
- 2) Remove Retaining ring (58) from Worm (52) after checking the sure lock of drum.
- 3) Release all spring tension by turning Worm (52) counterclockwise, and remove Worm.
- 4) Take off a Spring balancer from the support.
- 5) Remove Wire guide (55), (56) from Casing (1).
- 6) Loosen Set screws (14), and remove all Pins (13).
- 7) Remove Gauge (53).
- 8) Loosen Hex. head bolts (39), and remove Cover (35).
NOTE: Replace Wheel (37), Ratchet (29), Spring (34) etc. If they has been damaged.
- 9) Install Cover (35).
- 1 1) Install Hex. head bolts (39).
- 1 2) Equip Wire rope (40) to Drum (19) after passing Wire rope through the Wire rope entrance on Casing (1) and then Fix Wire rope with Plug (50).
 See chapter 7 "Wire rope replacement", ※※).
- 1 3) Adjust the spring tension, and install Gauge (53)、 Pins (13)、 wire guide (55) and (56). See Chapter 8 "Spring replacement", 13) -18).

6. Inspections



WARNING

Periodically inspect the balancer, and replace any worn or damaged parts.

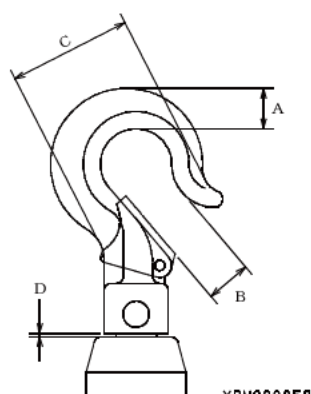


CAUTION

Always use genuine parts for replacement.

- Inspect the balancer at least once a month.
Correct and repair any problems which are detected.
Make the inspection interval shorter when operating frequently or under hostile environments. (See Fig. 5.)

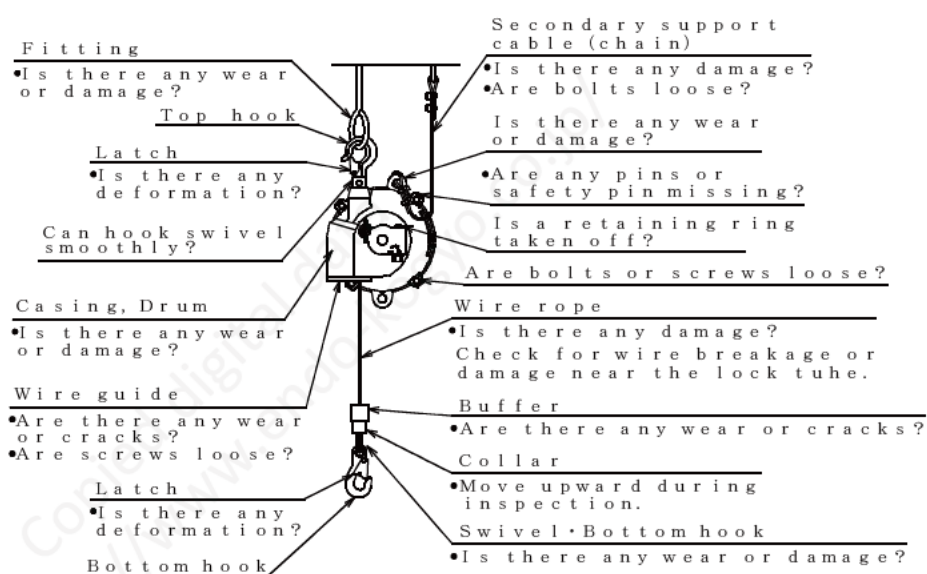
■ Service limit of top hook



YBM000058

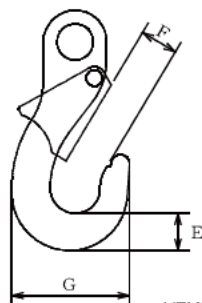
Limit dimension(mm)			
A	B	C	D
15.3	20.0	54.5	2.0

Fig. 5



YBM000058

■ Service limit of bottom hook

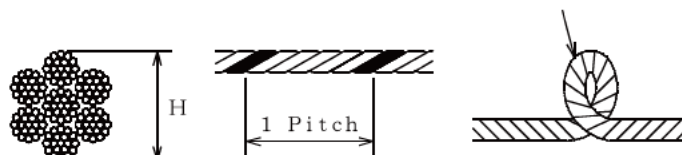


YBM000060

Limit dimension(mm)		
E	F	G
14.9	19.5	53.5

■ Service limit of wire rope

There must be no kinks.

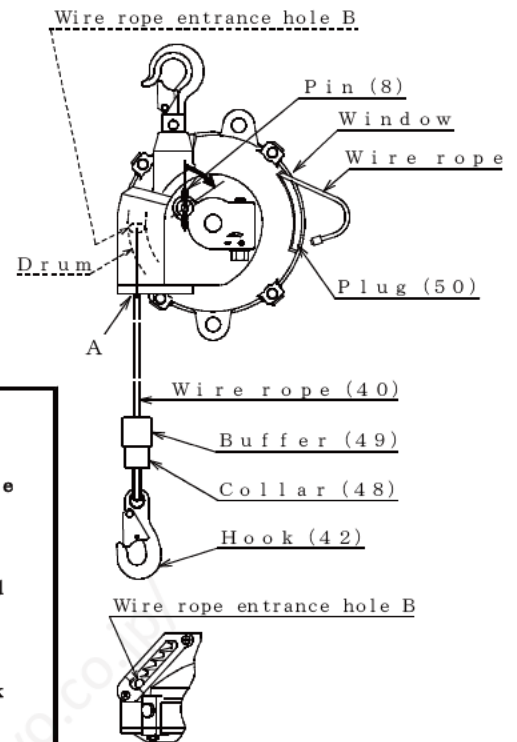


H dimension(mm)		Allowable number of broken wires in 1 pitch
Standard	Limit	
4.76	4.3	13

7. Wire rope replacement

- 1) Lower the tool/device, extending Wire rope to the maximum cable travel.
- 2) Position Plug(50) which is screwed on the drum, at the casing opening as shown in Fig.6, and engage the drum lock. See Chapter 4-2 "Drum lock operation".
- 3) Move the tool/device upward and downward to check Drum(19) is locked securely.
Remove the tool/device from bottom Hook(32).

Fig. 6



WARNING

Never remove the suspended tool/device before checking Drum(19) is locked securely. If Drum(19) is not locked securely, the drum lock could be released allowing Wire rope(40) to snap back or Drum to rotate suddenly, possibly causing personal injury. Drum lock check is very important factor for safety. Never fail to verify the sufficient in the manual.

- 4) Remove the balancer from the fitting and place on the floor.
- 5) Remove Plug(50), and remove old Wire rope from Drum.
If the tip of wire rope stuck in drum, push the tip of wire rope into using a driver or etc, and try again. (See fig.7)
- 6) Insert a new Wire rope from the A-side into "Wire rope entrance hole B" and pass it through Drum.
If the Wire rope is caught in the drum and doesn't pass through the drum, press and twist the Wire rope. This operation will make it easy to pass the Wire rope through the drum.
- 7) Attach the end of Wire rope to Drum and fasten with plug(50).
- 8) Install the balancer on the fitting. See Chapter 3-1 "Balancer installation".
- 9) Attach the tool/device to bottom Hook, and release the drum lock.

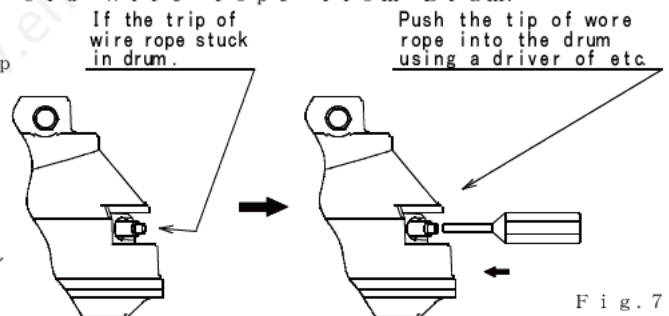


Fig. 7



WARNING

Never release the drum lock before attaching the tool/device. If released, Wire rope will snap back and could cause personal injury. Always release the drum lock after arranging the tension of spring suspending a tool. This is important factor for safety. Never fail to abide by the procedure instructed in the manual.

8. Spring replacement



WARNING

- Never remove the spring from the spring case.
If removed, the spring will expand explosively and cause personal injury.
- Replace the spring assembly as a whole.

Referring to the disassembly drawings (on pages 17, 19 and 21), disassemble the balancer using the following procedure.

1) A. When the spring has broken.

- Single spring type:EWA-22 and EWA-30
Remove the tool/device from bottom Hook (42).
- Double spring type:EWA-40, 50, 60 and EWA-70



CAUTION

EWA-40, 50, 60 and EWA-70 employ two springs, therefore some spring tension remains in case of one spring breakage. Be careful when disassembling.

Lock Drum according to Chapter 4-2 "Drum lock operation", and remove the tool/device from bottom Hook (42).

B. When the spring has not broken.

Lift, then remove the tool/device from bottom Hook (42) after Wire rope (40) is fully retracted into Drum (19).

- 2) Remove the balancer from the fitting and place on the floor.
- 3) Remove Gauge (53).
- 4) Remove Retaining ring (58) from worm (52).
Release all spring tension by turning worm counterclockwise until Worm can almost be removed.
If the drum lock is activated, check there is no spring tension remaining, and then release the drum lock.
NOTE: Check the spring tension by pulling Wire rope (40).
- 5) Turn Worm (52) further and remove it.
- 6) Remove Wire guide (55), (56) from Casing (1).
- 7) Loosen Set screws (14), and remove all Pins (13).
- 8) Remove Plug (50), and remove Wire rope (40) from Drum (19).
- 9) Remove Cover (35), and remove Spring case (21), Drum (19), and Spindle (15) together from the Casing (1).
- 10) Remove Spindle (15).
- 11) Remove Hex. head bolts (24), (25) and remove Spring case (21) from Drum (19).
- 12) Remove Bushing (23) from Spring case (21).



WARNING

Never remove Cover (22) from Spring case (21).
If removed, the internal spring could pop out and cause personal injury.

13) Reassemble in reverse order.

- Pins (13) should be installed after adjusting the spring tension as instructed below.

14) Wind the spring by turning Worm (52) clockwise.

NOTE: While turning Worm, Wire rope (40) will be retracted into Drum (19).

Pay attention Wire rope does not slip out from the drum groove.

After Wire rope is fully retracted, turn Worm by the number of turns shown in Table 1.

Table 1

Model	Number of turns	Model	Number of turns
EWA-22	75	EWA-50	95
EWA-30	80	EWA-60	115
EWA-40	105	EWA-70	90

15) Attach a weight, which has been confirmed that the weight is within the capacity range, to bottom Hook (42) and adjust the spring tension.

16) Attach and adjust Gauge (53).

17) Attach Pins (13) to Casing (1) (see Fig. 8).

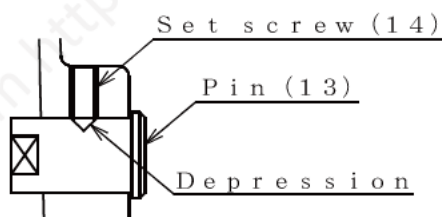
Fasten depressions in Pins with Set screws (14).



WARNING

If installation of Pins (13) is incorrect or missed, the fall prevention device will not operate in case of spring breakage, causing personal injury or damage to equipment.

Fig. 8



18) Attach Wire guide (55), (56) to Casing (1)

Fasten Hex.Socket button bolt (57) with the torque of 2.8~3.0 N·m {0.28~0.3 kgf·m}.

9. Wire guide replacement

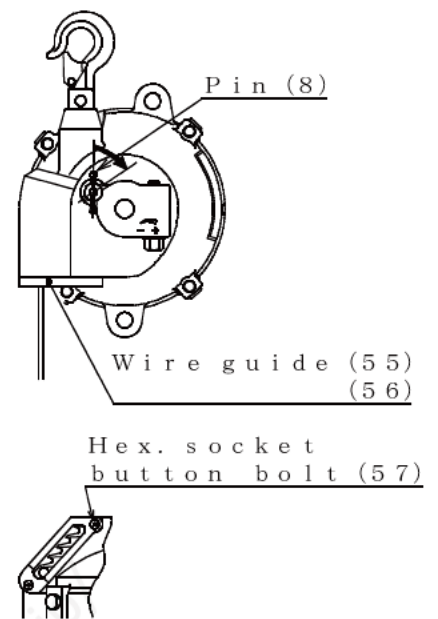
- 1) Pull out wire guide (55)、(56) to the position which wire guide replacement is available and lock drum with drum lock device (refer to fig.9). Refer to Chapter 4-2 "Drum lock operation".
- 2) After confirming that drum lock is surely on work, moving a suspended tool up and down, take off a suspended tool.



WARNING

Never remove the suspended tool/device before checking Drum (19) is locked securely. If Drum (19) is not locked securely, the drum lock could be released allowing Wire rope (40) to snap back or Drum to rotate suddenly, possibly causing personal injury. Drum lock check is very important factor for safety. Never fail to verify the sufficient in the manual.

Fig. 9



- 3) Remove the balancer from a fitting and place on the floor.
- 4) Remove Bolt (57), and remove old Wire rope from Drum.
- 5) Remove Wire guide (55), (56) from Casing (1).
NOTE: Whenever a Wire guide set is replaced with a new one, always replase Hex.Socket button bolt (57) as well.
Fasten Hex.Socket button bolt with the torque of $2.8 \sim 3.0 \text{ N}\cdot\text{m}$ $\{0.28 \sim 0.3 \text{ kgf}\cdot\text{m}\}$.
- 6) Mount the balancer from a fitting and place on the floor. Refer to Chapter 3-1 "Balancer Installation".
- 7) Attach the tool/device to bottom Hook, and release the drum lock.

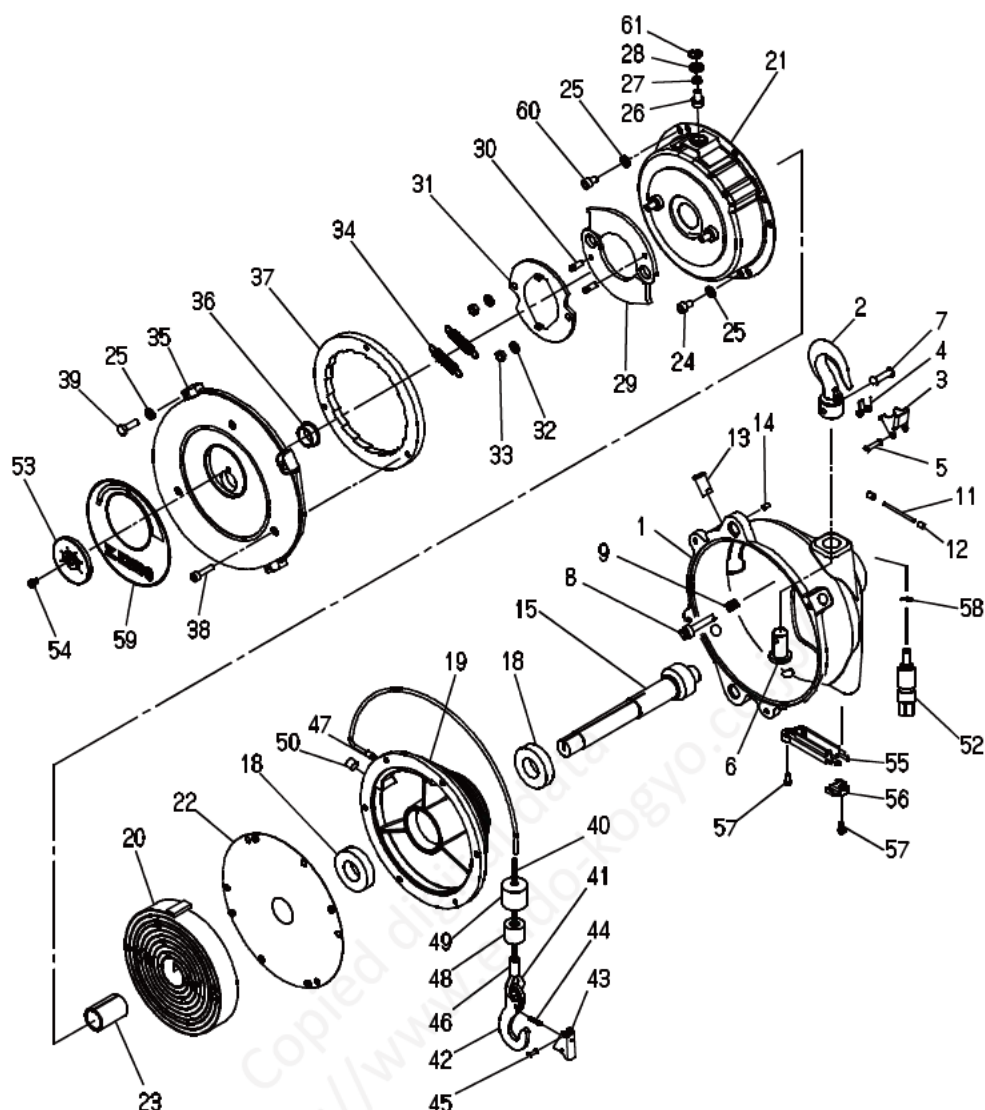


WARNING

Never release the drum lock before attaching the tool/device. If released, Wire rope will snap back and could cause personal injury. Always release the drum lock after arranging the tension of spring suspending a tool. This is important factor for safety. Never fail to abide by the procedure instructed in the manual.

10. PARTS LIST

EWA-22, EWA-30



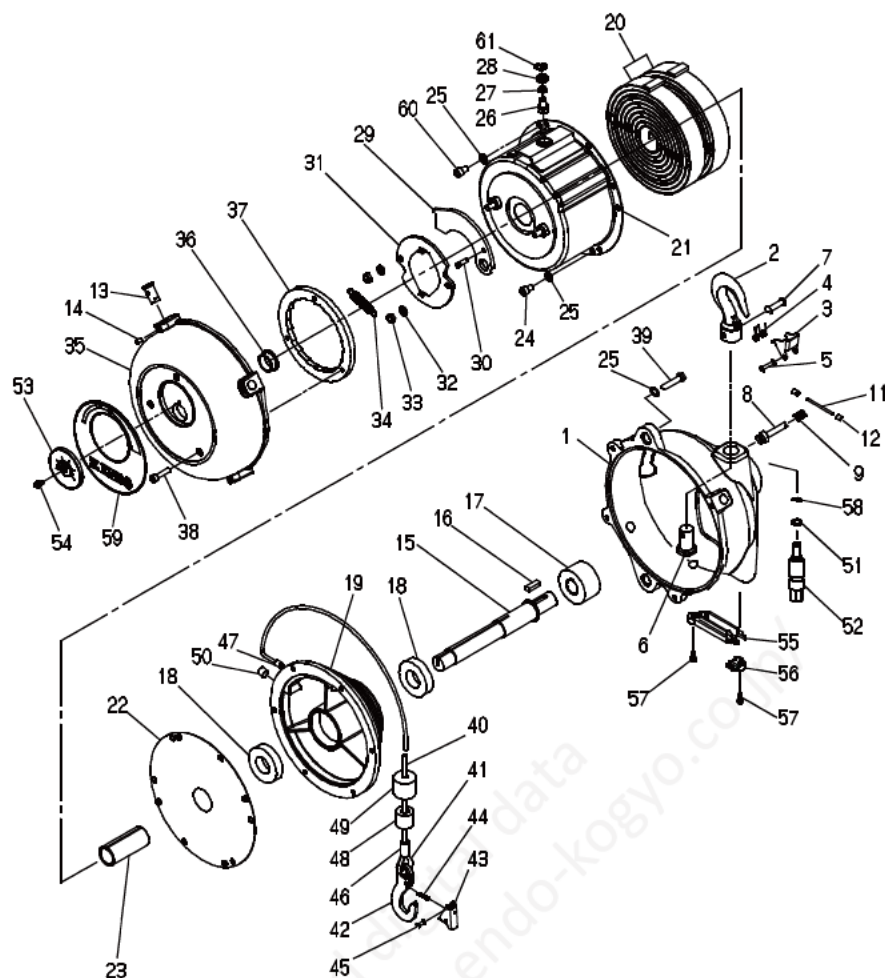
照合番号 Ref. No.	部品番号 Part No.	部 品 名 称	個数 / Quantity		Description
			EWA-22	EWA-30	
—	LBP001015	ケース部 1 式	1	1	Casing assembly
1	P2B100125	—ケース	1	1	—Casing
—	LBP000215	—フック 1 式	1	1	—Hook complete
2	—	—フック	1	1	—Hook
—	LBP000216	—外止メ 1 式	1	1	—Latch set
3	—	—外止メ	1	1	—Latch
4	—	—スプリング	1	1	—Spring
5	—	—丸リベット	1	1	—Rivet
6	—	—シャフト	1	1	—Shaft
7	—	—丸リベット	1	1	—Rivet
8	P2B400358	—ピン	1	1	—Pin
9	P2B400082	—スプリング	1	1	—Spring
1 1	P2B400225	—スプリングピン	1	1	—Spring pin
1 2	P2B400359	—キャップ	2	2	—Cap
1 3	P2B400045	—ピン	4	4	—Pin
1 4	P2B400042	—六角穴付止ネジ	4	4	—Set screw
1 5	P2B300597	スピンドル	1	1	Spindle
1 8	KA60103040	ボールベアリング	2	2	Ball bearing
1 9	P2B100047	ドラム	1	1	Drum
—	LBP000858	スプリング部 1 式	1	—	Spring assembly
—	LBP000859	スプリング部 1 式	—	1	Spring assembly

照合番号 Ref. No.	部品番号 Part No.	部 品 名 称	個数 / Quantity		Description
			EWA-22	EWA-30	
2 0	—	—スプリング	1	—	—Spring
2 0	—	—スプリング	—	1	—Spring
2 1	—	—スプリングケース	1	1	—Spring case
2 2	—	—カバー	1	1	—Cover
2 3	P2B300194	ブッシュ	1	1	Bushing
2 4	KA00120610	六角ボルト	5	5	Hex.head bolt
6 0	P2B401234	六角ボルト	1	1	Hex.head bolt
2 5	KA31120600	バネ座金	1 0	1 0	Spring washer
—	LBP000225	—安全ピン 1 式	1	1	—Safety pin set
2 6	—	—安全ピン	1	1	—Safety pin
2 7	—	—スプリング	1	1	—Spring
2 8	—	—スペーサ	1	1	—Spacer
6 1	—	—穴用 C 形止メ輪	1	1	—Retaining ring
—	LBP000865	ラチェット 1 式	2	2	Ratchet set
2 9	—	—ラチェット	2	2	—Ratchet
3 0	—	—ピン	2	2	—Pin
3 1	P2B300600	プレート	1	1	Plate
3 2	KA31120800	バネ座金	2	2	Spring washer
3 3	KA20320800	六角ナット	2	2	Hex.nut
3 4	P2B400982	スプリング	2	2	Spring
—	LBP000863	カバー 1 式	1	1	Cover complete
3 5	—	—カバー	1	1	—Cover
3 6	—	—ブッシュ	1	1	—Bushing
3 7	P2B300601	ホイール	1	1	Wheel
3 8	KA00910625	六角穴付ボルト	3	3	Cap screw
3 9	KA00120640	六角ボルト	4	4	Hex.head bolt
—	LBP000139	ワイヤロープ 1 式	1	1	Wire rope assembly
4 0	—	—ワイヤロープ	1	1	—Wire rope
4 1	—	—シンブル	1	1	—Thimble
—	LBP002127	—フック 1 式	1	1	—Hook complete
4 2	—	—フック	1	1	—Hook
—	LBP002128	—外レ止メ 1 式	1	1	—Latch set
4 3	—	—外レ止メ	1	1	—Latch
4 4	—	—スプリング	1	1	—Spring
4 5	—	—丸リベット	1	1	—Rivet
4 6	—	—ロック管	1	1	—Lock tube
4 7	—	—ロック管	1	1	—Lock tube
4 8	P2B400151	—カラー	1	1	—Collar
4 9	P2B400148	—緩衝ゴム	1	1	—Buffer
5 0	P2B400179	プラグ	1	1	Plug
5 2	P2B300062	ウォーム	1	1	Worm
5 3	P2B300196	ゲージ	1	—	Gauge
5 3	P2B300197	ゲージ	—	1	Gauge
5 4	P2B400165	スクリュー	1	1	Screw
—	LBP001021	ワイヤガイド 1 式	1	1	Wire guide set
5 5	—	—ワイヤガイド	1	1	—Wire guide
5 6	—	—ワイヤガイド	1	1	—Wire guide
5 7	P2B401213	—六角穴付ボタンボルト	2	2	—Hex.socket button bolt
5 8	KA40310050	E 形止メ輪	1	1	Retaining ring
5 9	P2B300606	ネームプレート	1	—	Name plate
5 9	P2B300607	ネームプレート	—	1	Name plate

NOTE) When placing on order, clearly specify the product model, part number and description.
Parts without a part number cannot be supplied respectively.
Please purchase a set or complete unit.

10. PARTS LIST

EWA-40, EWA-50



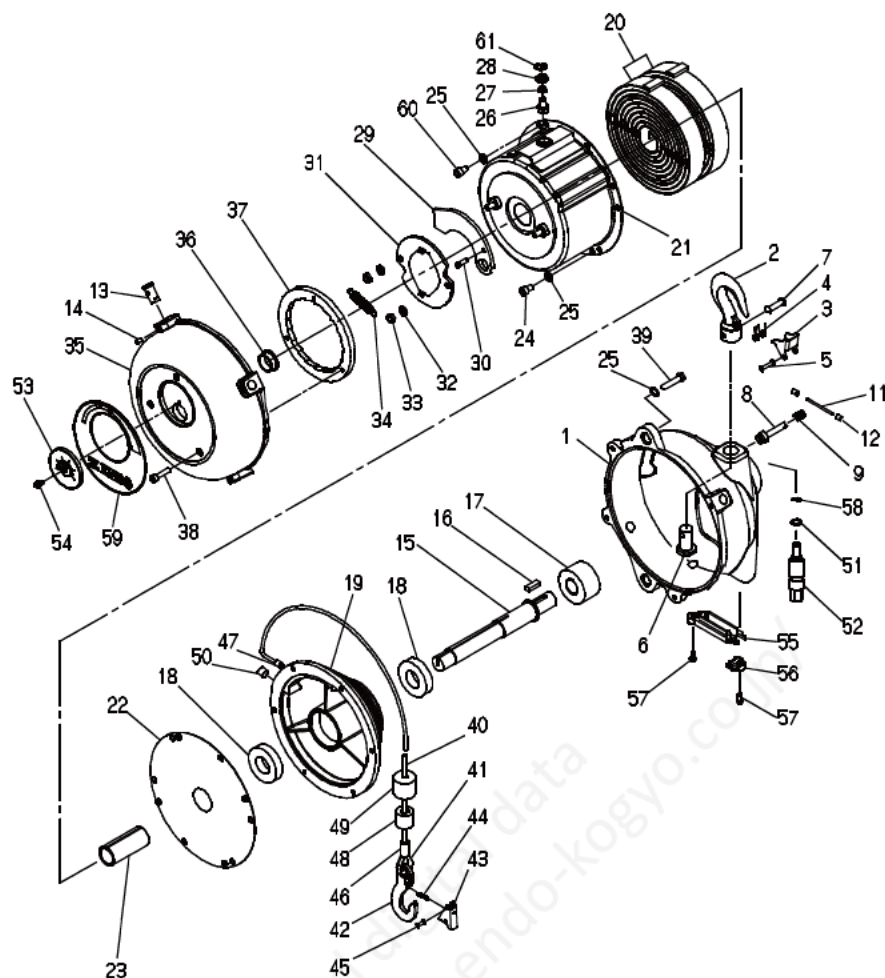
照合番号 Ref.No.	部品番号 Part No.	部 品 名 称	個数 / Quantity		Description
			EWA-40	EWA-50	
—	LBP001016	ケース部 1 式	1	1	Casing assembly
1	P2B100128	—ケース	1	1	—Casing
—	LBP000215	—フック 1 式	1	1	—Hook complete
2	—	—フック	1	1	—Hook
—	LBP000216	—外レ止メ 1 式	1	1	—Latch set
3	—	—外レ止メ	1	1	—Latch
4	—	—スプリング	1	1	—Spring
5	—	—丸リベット	1	1	—Rivet
6	—	—シャフト	1	1	—Shaft
7	—	—丸リベット	1	1	—Rivet
8	P2B400380	—ピン	1	1	—Pin
9	P2B400082	—スプリング	1	1	—Spring
10	P2B400249	—スクリュー	1	1	—Screw
11	P2B400225	—スプリングピン	1	1	—Spring pin
12	P2B400359	—キャップ	2	2	—Cap
15	P2B300598	スピンドル	1	1	Spindle
16	P2B400164	キー	1	1	Key
17	P2B300051	ウォームホイール	1	1	Worm wheel
18	KA60103040	ボールベアリング	2	2	Ball bearing
19	P2B100047	ドラム	1	1	Drum
—	LBP000860	スプリング部 1 式	1	—	Spring assembly
—	LBP000861	スプリング部 1 式	—	1	Spring assembly
20	—	—スプリング	2	—	—Spring
20	—	—スプリング	—	2	—Spring
21	—	—スプリングケース	1	1	—Spring case

照合番号 Ref. No.	部品番号 Part No.	部 品 名 称	個数 / Quantity		Description
			EWA-40	EWA-50	
2 2	—	—カバー	1	1	—Cover
2 3	P2B300203	ブッシュ	1	1	Bushing
2 4	KA00120610	六角ボルト	5	5	Hex.head bolt
6 0	P2B401234	六角ボルト	1	1	Hex.head bolt
2 5	KA31120600	バネ座金	1 0	1 0	Spring washer
—	LBP000272	—安全ピン1式	1	1	—Safety pin set
2 6	—	—安全ピン	1	1	—Safety pin
2 7	—	—スプリング	1	1	—Spring
2 8	—	—スペーサ	1	1	—Spacer
6 1	—	—穴用C形止メ輪	1	1	—Retaining ring
—	LBP000865	ラチェット1式	1	1	Ratchet set
2 9	—	—ラチェット	1	1	—Ratchet
3 0	—	—ピン	1	1	—Pin
3 1	P2B300600	プレート	1	1	Plate
3 2	KA31120800	バネ座金	2	2	Spring washer
3 3	KA20320800	六角ナット	2	2	Hex.nut
3 4	P2B400982	スプリング	1	1	Spring
—	LBP000898	カバー部1式	1	1	Cover assembly
—	LBP000864	—カバー1式	1	1	—Cover complete
3 5	—	—カバー	1	1	—Cover
3 6	—	—ブッシュ	1	1	—Bushing
1 3	P2B400045	—ピン	4	4	—Pin
1 4	P2B400042	—六角穴付止ネジ	4	4	—Set screw
3 7	P2B300601	ホイール	1	1	Wheel
3 8	KA00910625	六角穴付ボルト	3	3	Cap screw
3 9	KA00120640	六角ボルト	4	4	Hex.head bolt
—	LBP000139	ワイヤロープ1式	1	1	Wire rope assembly
4 0	—	—ワイヤロープ	1	1	—Wire rope
4 1	—	—シンブル	1	1	—Thimble
—	LBP002127	—フック1式	1	1	—Hook complete
4 2	—	—フック	1	1	—Hook
—	LBP002128	—外レ止メ1式	1	1	—Latch set
4 3	—	—外レ止メ	1	1	—Latch
4 4	—	—スプリング	1	1	—Spring
4 5	—	—丸リベット	1	1	—Rivet
4 6	—	—ロック管	1	1	—Lock tube
4 7	—	—ロック管	1	1	—Lock tube
4 8	P2B400151	—カラー	1	1	—Collar
4 9	P2B400148	—緩衝ゴム	1	1	—Buffer
5 0	P2B400179	プラグ	1	1	Plug
5 1	P2B400163	ワッシャ	1	1	Washer
5 2	P2B300063	ウォーム	1	1	Worm
5 3	P2B300205	ゲージ	1	—	Gauge
5 3	P2B300206	ゲージ	—	1	Gauge
5 4	P2B400165	スクリュー	1	1	Screw
—	LBP001021	ワイヤガイド1式	1	1	Wire guide set
5 5	—	—ワイヤガイド	1	1	—Wire guide
5 6	—	—ワイヤガイド	1	1	—Wire guide
5 7	P2B401213	—六角穴付ボタンボルト	2	2	—Hex.socket button bolt
5 8	KA40310060	E形止メ輪	1	1	Retaining ring
5 9	P2B300608	ネームプレート	1	—	Name plate
5 9	P2B300609	ネームプレート	—	1	Name plate

NOTE) When placing on order, clearly specify the product model, part number and description.
Parts without a part number cannot be supplied respectively.
Please purchase a set or complete unit.

10. PARTS LIST

EWA-60, EWA-70



照合番号 Ref.No.	部品番号 Part No.	部 品 名 称	個数 / Quantity		Description
			EWA-60	EWA-70	
—	LBP001016	ケース部 1 式	1	1	Casing assembly
1	P2B100128	—ケース	1	1	—Casing
—	LBP000215	—フック 1 式	1	1	—Hook complete
2	—	—フック	1	1	—Hook
—	LBP000216	—外レ止メ 1 式	1	1	—Latch set
3	—	—外レ止メ	1	1	—Latch
4	—	—スプリング	1	1	—Spring
5	—	—丸リベット	1	1	—Rivet
6	—	—シャフト	1	1	—Shaft
7	—	—丸リベット	1	1	—Rivet
8	P2B400380	—ピン	1	1	—Pin
9	P2B400082	—スプリング	1	1	—Spring
10	P2B400249	—スクリュー	1	1	—Screw
11	P2B400225	—スプリングピン	1	1	—Spring pin
12	P2B400359	—キャップ	2	2	—Cap
15	P2B300643	スピンドル	1	1	Spindle
16	P2B400164	キー	1	1	Key
17	P2B300051	ウォームホイール	1	1	Worm wheel
18	KA60103040	ボールベアリング	2	2	Ball bearing
19	P2B100047	ドラム	1	1	Drum
—	LBP000903	スプリング部 1 式	1	—	Spring assembly
—	LBP000904	スプリング部 1 式	—	1	Spring assembly
20	—	—スプリング	2	—	—Spring
20	—	—スプリング	—	2	—Spring
21	—	—スプリングケース	1	1	—Spring case

照合番号 Ref. No.	部品番号 Part No.	部 品 名 称	個数 / Quantity		Description
			EWA-60	EWA-70	
2 2	—	—カバー	1	1	—Cover
2 3	P2B300204	ブッシュ	1	1	Bushing
2 4	KA00120610	六角ボルト	5	5	Hex.head bolt
6 0	P2B401234	六角ボルト	1	1	Hex.head bolt
2 5	KA31120600	バネ座金	1 0	1 0	Spring washer
—	LBP000272	—安全ピン1式	1	1	—Safety pin set
2 6	—	—安全ピン	1	1	—Safety pin
2 7	—	—スプリング	1	1	—Spring
2 8	—	—スペーサ	1	1	—Spacer
6 1	—	—穴用C形止メ輪	1	1	—Retaining ring
—	LBP000865	ラチェット1式	1	1	Ratchet set
2 9	—	—ラチェット	1	1	—Ratchet
3 0	—	—ピン	1	1	—Pin
3 1	P2B300600	プレート	1	1	Plate
3 2	KA31120800	バネ座金	2	2	Spring washer
3 3	KA20320800	六角ナット	2	2	Hex.nut
3 4	P2B400982	スプリング	1	1	Spring
—	LBP000906	カバー部1式	1	1	Cover assembly
—	LBP000905	—カバー1式	1	1	—Cover complete
3 5	—	—カバー	1	1	—Cover
3 6	—	—ブッシュ	1	1	—Bushing
1 3	P2B400045	—ピン	4	4	—Pin
1 4	P2B400042	—六角穴付止ネジ	4	4	—Set screw
3 7	P2B300601	ホイール	1	1	Wheel
3 8	KA00910625	六角穴付ボルト	3	3	Cap screw
3 9	KA00120640	六角ボルト	4	4	Hex.head bolt
—	LBP000139	ワイヤロープ1式	1	1	Wire rope assembly
4 0	—	—ワイヤロープ	1	1	—Wire rope
4 1	—	—シンブル	1	1	—Thimble
—	LBP002127	—フック1式	1	1	—Hook complete
4 2	—	—フック	1	1	—Hook
—	LBP002128	—外レ止メ1式	1	1	—Latch set
4 3	—	—外レ止メ	1	1	—Latch
4 4	—	—スプリング	1	1	—Spring
4 5	—	—丸リベット	1	1	—Rivet
4 6	—	—ロック管	1	1	—Lock tube
4 7	—	—ロック管	1	1	—Lock tube
4 8	P2B400151	—カラー	1	1	—Collar
4 9	P2B400148	—緩衝ゴム	1	1	—Buffer
5 0	P2B400179	プラグ	1	1	Plug
5 1	P2B400163	ワッシャ	1	1	Washer
5 2	P2B300063	ウォーム	1	1	Worm
5 3	P2B300207	ゲージ	1	—	Gauge
5 3	P2B300208	ゲージ	—	1	Gauge
5 4	P2B400165	スクリュー	1	1	Screw
—	LBP001021	ワイヤガイド1式	1	1	Wire guide set
5 5	—	—ワイヤガイド	1	1	—Wire guide
5 6	—	—ワイヤガイド	1	1	—Wire guide
5 7	P2B401213	—六角穴付ボタンボルト	2	2	—Hex.socket button bolt
5 8	KA40310060	E形止メ輪	1	1	Retaining ring
5 9	P2B300644	ネームプレート	1	—	Name plate
5 9	P2B300645	ネームプレート	—	1	Name plate

NOTE) When placing on order, clearly specify the product model, part number and description.
Parts without a part number cannot be supplied respectively.
Please purchase a set or complete unit.

ENDO KOGYO CO., LTD.

Head Office: 3-14-7, Akiba-cho, Tsubame, Niigata, Japan
Tel. 0256-62-5133 Fax. 0256-62-5772

Tokyo Office: JBSL Kanda Bldg., 2F, 12-2, Kanda Higashimatushita-cho,
Chiyoda-ku, Tokyo Japan
Tel. 03-5295-3711 Fax. 03-5295-3717

Osaka Office: Daito Bldg., 3F, 3-14, Saiwai-cho 2-chome,
Naniwa-ku, Osaka, Japan
Tel. 06-6568-1571 Fax. 06-6568-1573

Nagoya Office: Park IM Bldg., 3F, 1-7-14, Osu,
Naka-ku, Nagoya, Aichi, Japan
Tel. 052-253-6231 Fax. 052-253-6240

Kyusyu Office: Bunki Bldg., 3F, 11-15, Hakataekihigashi 3-chome,
Hakata-ku, Fukuoka, Japan
Tel. 092-412-5281 Fax. 092-412-5280

URL <http://www.endo-kogyo.co.jp>

- This manual and the specifications of this product are subject to change for improvement without advance notice.
- It is strictly prohibited to reprint or copy any information contained in this manual.