

## Totally-Enclosed TORQUE MOTOR CABLE REEL

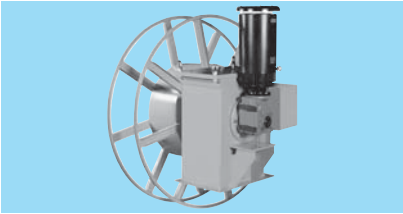
● **Protective structure** ..... **Approx. IP44**

### ■ Features

Applicable to install at outside without a motor cover.  
The vertical mounted motor provides less space at installation site.

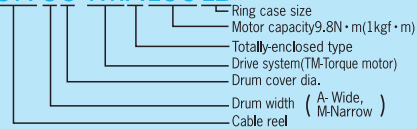
### ■ Applications

Power supply for Overhead crane control  
Power supply for Receptacle boxes  
Power supply for Gondola, etc.



### Model description

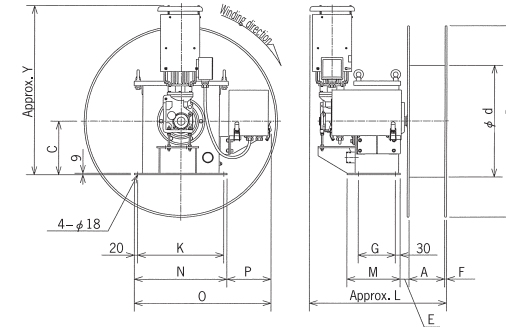
## CR-56-TMX1001B



Ring case size  
Motor capacity 9.8N·m(1kgf·m)  
Totally-enclosed type  
Drive system(TM-Torque motor)  
Drum cover dia.  
Drum width ( A-Wide, M-Narrow )  
Cable reel

## Slip ring capacity (Rated voltage AC600V)

Rated current	Number of poles				
Ring case	1B	1C	2B	2C	2D
20A	3~20	22~30	3~20	22~30	—
50A	3~10	12~20	3~10	12~20	—
100A	3~8	—	3~8	—	—
150A	3·4	—	3·4	—	—
200A	—	—	—	—	3·4



## Specifications and Dimensions

Model	Gear reduction ratio	Motor torque N·m	Slip ring capacity	Voltage regulator capacity kVA	Dimensions (mm)			
					D	d	A	C
CR-56-TMX1001B	1/10,1/15,1/19,1/24	10(1.0)	20A~150A	2	630	360	170	335
CR-56-TMX1001C	1/10,1/15,1/19,1/24	10(1.0)	20A~50A	2	630	360	170	335
CR-67-TMX1001B	1/10,1/15,1/19,1/24	10(1.0)	20A~150A	2	750	440	220	335
CR-67-TMX1001C	1/10,1/15,1/19,1/24	10(1.0)	20A~50A	2	750	440	220	335
CR-6M8-TMX1001B	1/10,1/15,1/19,1/24	10(1.0)	20A~150A	2	870	440	170	335
CR-6M8-TMX1001C	1/10,1/15,1/19,1/24	10(1.0)	20A~50A	2	870	440	170	335
CR-79-TMX1001B	1/10,1/15,1/19,1/24	10(1.0)	20A~150A	2	1000	550	220	335
CR-79-TMX1001C	1/10,1/15,1/19,1/24	10(1.0)	20A~50A	2	1000	550	220	335
CR-7M9-TMX1001B	1/10,1/15,1/19,1/24	10(1.0)	20A~150A	2	1000	550	170	335
CR-7M9-TMX1001C	1/10,1/15,1/19,1/24	10(1.0)	20A~50A	2	1000	550	170	335
CR-7A9-TMX1001B	1/10,1/15,1/19,1/24	10(1.0)	20A~150A	2	1000	550	275	335
CR-7A9-TMX1001C	1/10,1/15,1/19,1/24	10(1.0)	20A~50A	2	1000	550	275	335
CR-8M10-TMX1002B	1/10,1/15,1/19,1/24	10(1.0)	20A~150A	2	1200	700	220	335
CR-8M10-TMX1002C	1/10,1/15,1/19,1/24	10(1.0)	20A~50A	2	1200	700	220	335
CR-810-TMX1002B	1/10,1/15,1/19,1/24	10(1.0)	20A~150A	2	1200	700	275	335
CR-810-TMX1002C	1/10,1/15,1/19,1/24	10(1.0)	20A~50A	2	1200	700	275	335
CR-811-TMX1002B	1/10,1/15,1/19,1/24	10(1.0)	20A~150A	2	1400	700	275	335
CR-811-TMX1002C	1/10,1/15,1/19,1/24	10(1.0)	20A~50A	2	1400	700	275	335
CR-812-TMX2002B	1/10,1/15,1/19	20(2.0)	20A~150A	3	1600	700	275	335
CR-812-TMX2002C	1/10,1/15,1/19	20(2.0)	20A~50A	3	1600	700	275	335
CR-812-TMX2002D	1/10,1/15,1/19	20(2.0)	200A	3	1600	700	275	335
CR-913-TMX2002B	1/10,1/15,1/19	20(2.0)	20A~150A	3	1800	900	305	335
CR-913-TMX2002C	1/10,1/15,1/19	20(2.0)	20A~50A	3	1800	900	305	335
CR-913-TMX2002D	1/10,1/15,1/19	20(2.0)	200A	3	1800	900	305	335
CR-914-TMX2002B	1/10,1/15,1/19	20(2.0)	20A~150A	3	2000	900	305	335
CR-914-TMX2002C	1/10,1/15,1/19	20(2.0)	20A~50A	3	2000	900	305	335
CR-914-TMX2002D	1/10,1/15,1/19	20(2.0)	200A	3	2000	900	305	335

NOTE: No upside down setting or side setting is allowed.

Dimensions (mm)										Mass (Kg)
E	F	O	P	K±1	N	Y	L	G±1	M	
55	5	860	285	535	575	1070	885	310	370	235
55	5	860	285	535	575	1070	985	410	470	245
55	5	860	285	535	575	1070	935	310	370	245
55	5	860	285	535	575	1070	1035	410	470	255
55	5	860	285	535	575	1070	885	310	370	255
55	5	860	285	535	575	1070	985	410	470	265
55	30	860	285	535	575	1070	935	310	370	260
55	30	860	285	535	575	1070	1035	410	470	270
55	30	860	285	535	575	1070	885	310	370	255
55	30	860	285	535	575	1070	985	410	470	265
55	30	860	285	535	575	1070	990	310	370	265
55	30	860	285	535	575	1070	1090	410	470	275
69	30	860	285	535	575	1070	970	310	370	285
69	30	860	285	535	575	1070	1070	410	470	295
69	30	860	285	535	575	1070	1025	310	370	305
69	30	860	285	535	575	1070	1125	410	470	315
69	30	860	285	535	575	1070	1025	310	370	310
69	30	860	285	535	575	1070	1125	410	470	320
69	30	930	355	535	575	1250	1025	310	370	360
69	30	930	355	535	575	1250	1125	410	470	370
69	30	930	355	535	575	1250	1025	310	370	375
79	30	930	355	535	575	1250	1070	310	370	390
79	30	930	355	535	575	1250	1170	410	470	400
79	30	1075	355	680	720	1250	1070	310	370	405
79	30	930	355	535	575	1250	1070	310	370	395
79	30	930	355	535	575	1250	1170	410	470	405
79	30	1075	355	680	720	1250	1070	310	370	410

# TORQUE MOTOR CABLE REEL

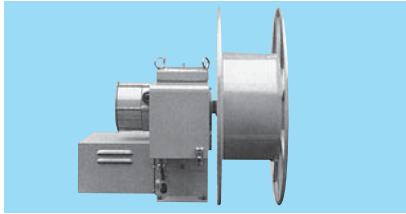
● **Protective structure** ..... **Approx.IP33**

## ■ Features

Take advantage of torque motor for winding reels.  
Suitable for long stroke, high frequency, and high-speed winding

## ■ Applications

Power supply for Overhead crane control,  
Power supply for Receptacle boxes,  
Power supply for Gondola, Lift, etc.



## ■ Model description

### CR-89-TME400C

- Motor capacity 39.2N·m (4kgf·m)
- Gearbox size
- Drive system (TM; Torque motor)
- Drum cover dia.
- Drum width
- Cable reel

Fig.1

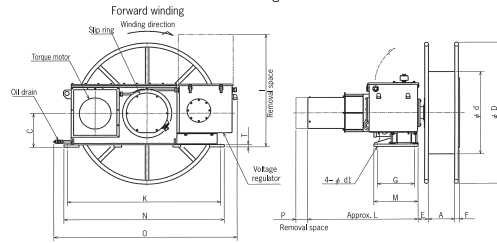
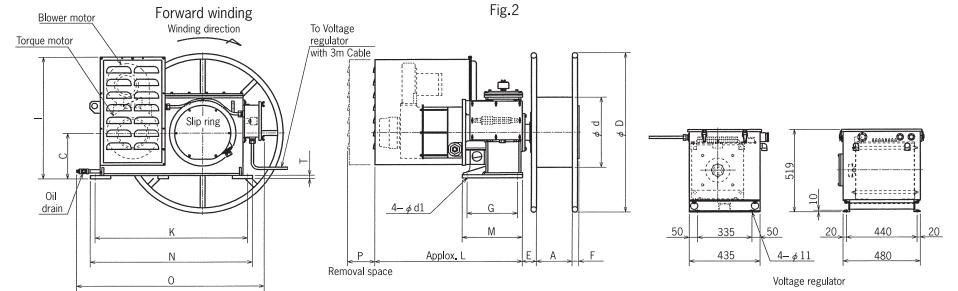


Fig.2



## ■ Specifications and Dimensions

Model	Gear reduction ratio	Motor torque N·m (kgf·m)	Slip ring capacity	Voltage regulator capacity kVA	Figure	Dimensions (mm)			
						D	d	A	C
CR-89-TME400C	1/16,1/20,1/25,1/32	40 (4.0)	20A~300A	6	Fig.2	1000	700	275	285
CR-810-TME400C	1/16,1/20,1/25,1/32	40 (4.0)	20A~300A	6	Fig.2	1200	700	275	285
CR-911-TME400C	1/16,1/20,1/25,1/32	40 (4.0)	20A~300A	6	Fig.2	1400	900	305	285
CR-912-TME2001	1/16,1/20,1/25,1/32	20 (2.0)	20A~300A	3	Fig.1	1600	900	305	285
CR-913-TME2001	1/16,1/20,1/25,1/32	20 (2.0)	20A~300A	3	Fig.1	1800	900	305	285
CR-914-TME2001	1/16,1/20,1/25,1/32	20 (2.0)	20A~300A	3	Fig.1	2000	900	305	285
CR-1014-TME400C	1/16,1/20,1/25,1/32	40 (4.0)	20A~300A	6	Fig.2	2000	1100	360	285

NOTE: No upside down setting or side setting is allowed.

\* Not include voltage regulator (approx. 80kg)

## ■ Slip ring capacity (Rated voltage AC600V)

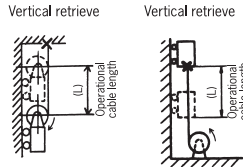
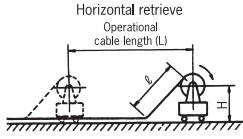
Slip ring capacity	Rated current	Number of poles											
		3	4	6	8	10	12	14	16	20	24	28	32
20	20A	3	4	6	8	10	12	14	16	20	24	28	32
50	50A	3	4	6	8	10	12	—	—	—	—	—	—
100	100A	3	4	—	—	—	—	—	—	—	—	—	—
150	150A	3	4	—	—	—	—	—	—	—	—	—	—
200	200A	3	4	—	—	—	—	—	—	—	—	—	—
300	300A	3	4	—	—	—	—	—	—	—	—	—	—

NOTE: Number of poles not listed above could be customized upon request.

### Dimensions (mm)

Dimensions (mm)												Mass (Kg)
E	L	F	O	P	I	G±1	K±1	M	N	T	d1	
85	920	40	1174	605	765	310	944	370	1004	20	22.0	* 580
85	920	40	1174	605	765	310	944	370	1004	20	22.0	* 590
85	920	40	1174	605	765	310	944	370	1004	20	22.0	* 610
85	800	40	1509	490	920	310	1284	370	1344	20	22.0	580
85	800	40	1509	490	920	310	1284	370	1344	20	22.0	590
85	800	40	1509	490	920	310	1284	370	1344	20	22.0	600
85	920	40	1174	605	765	310	944	370	1004	20	22.0	* 650

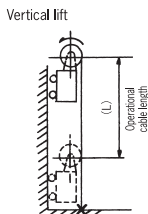
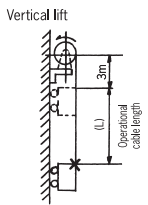
Operational cable length (L)	Torque motor type					Mobile application /Vertical & horizontal retrieve,				
	60m	70m	80m	90m	100m	60m	70m	80m	90m	100m
14mm <sup>2</sup> ×3C 0.795kg/m φ 20	6M8-TMX100 (i=1/10)	6M8-TMX100 (i=1/10)	6M8-TMX100 (i=1/10)	6M8-TMX100 (i=1/10)	7M9-TMX100 (i=1/15)					
14mm <sup>2</sup> ×4C 1.0kg/m φ 22	6M8-TMX100 (i=1/10)	6M8-TMX100 (i=1/10)	7M9-TMX100 (i=1/15)	7M9-TMX100 (i=1/15)	7M9-TMX100 (i=1/15)					
5.5mm <sup>2</sup> ×8C 1.0kg/m φ 24	79-TMX100 (i=1/15)	79-TMX100 (i=1/15)	79-TMX100 (i=1/15)	79-TMX100 (i=1/15)	79-TMX100 (i=1/15)					
22mm <sup>2</sup> ×3C 1.33kg/m φ 27	7A9-TMX100 (i=1/15)	7A9-TMX100 (i=1/15)	7A9-TMX100 (i=1/15)	7A9-TMX100 (i=1/15)	810-TMX100 (i=1/15)					
22mm <sup>2</sup> ×4C 1.67kg/m φ 29	7A9-TMX100 (i=1/15)	7A9-TMX100 (i=1/15)	7A9-TMX100 (i=1/15)	810-TMX100 (i=1/15)	810-TMX100 (i=1/15)					
38mm <sup>2</sup> ×3C 2.02kg/m φ 32	811-TMX100 (i=1/15)	811-TMX100 (i=1/15)	811-TMX100 (i=1/15)	811-TMX100 (i=1/15)	811-TMX100 (i=1/15)					
38mm <sup>2</sup> ×4C 2.55kg/m φ 35	811-TMX100 (i=1/15)	811-TMX100 (i=1/15)	811-TMX100 (i=1/15)	811-TMX100 (i=1/15)	811-TMX100 (i=1/15)					
60mm <sup>2</sup> ×3C 3.15kg/m φ 39	811-TMX100 (i=1/15)	811-TMX100 (i=1/15)	812-TMX200 (i=1/15)	812-TMX200 (i=1/15)	812-TMX200 (i=1/15)					
60mm <sup>2</sup> ×4C 4.02kg/m φ 44	812-TMX200 (i=1/15)	812-TMX200 (i=1/15)	812-TMX200 (i=1/15)	812-TMX200 (i=1/15)	913-TMX200 (i=1/19)					
100mm <sup>2</sup> ×3C 5.27kg/m φ 50	912-TME200 (i=1/20)	913-TME200 (i=1/20)	913-TME200 (i=1/20)	914-TME200 (i=1/25)	914-TME200 (i=1/25)					
100mm <sup>2</sup> ×4C 6.72kg/m φ 56	912-TME200 (i=1/20)	913-TME200 (i=1/20)	913-TME200 (i=1/20)	1014-TME400 (i=1/20)	1014-TME400 (i=1/20)					



NOTE: 1. Calculated at following conditions:

- ① Cable type 2PNCT ② Applications Mobile application /Vertical & horizontal retrieve, Stationary application /Vertical retrieve ③ Maximum travel/lift speed less than 40mm/min ④ Installation height less than 1.0m
2. Deviations due to roller guide, non-straight cable payout, low ambient temperature, etc. are not calculated. When selecting a model, please take into consideration of high mechanical stress and harsh environment conditions.
3. For high speed or high operation frequency rate, please use premium cables.
4. Suffix -R on all model names identifies reverse winding.
5. For any special requirements, please contact us.

Operational cable length (L)	Torque motor type		Stationary application /Vertical lift,			
	10m	15m	20m	25m	30m	
8mm <sup>2</sup> ×3C 0.525kg/m φ 17	56-TMX100 (i=1/10)	56-TMX100 (i=1/10)	56-TMX100 (i=1/10)	56-TMX100 (i=1/10)	56-TMX100 (i=1/10)	
14mm <sup>2</sup> ×3C 0.795kg/m φ 20	56-TMX100 (i=1/10)	56-TMX100 (i=1/10)	56-TMX100 (i=1/15)	67-TMX100 (i=1/15)	67-TMX100 (i=1/15)	
14mm <sup>2</sup> ×4C 1.0kg/m φ 22	56-TMX100 (i=1/10)	56-TMX100 (i=1/15)	67-TMX100 (i=1/15)	67-TMX100 (i=1/15)	67-TMX100 (i=1/19)	
5.5mm <sup>2</sup> ×8C 1.0kg/m φ 24	56-TMX100 (i=1/10)	56-TMX100 (i=1/15)	67-TMX100 (i=1/15)	67-TMX100 (i=1/15)	67-TMX100 (i=1/19)	
22mm <sup>2</sup> ×3C 1.33kg/m φ 27	67-TMX100 (i=1/15)	67-TMX100 (i=1/15)	67-TMX100 (i=1/15)	78-TMX200 (i=1/15)	78-TMX200 (i=1/15)	
22mm <sup>2</sup> ×4C 1.67kg/m φ 29	67-TMX100 (i=1/15)	67-TMX100 (i=1/15)	78-TMX200 (i=1/15)	78-TMX200 (i=1/15)	78-TMX200 (i=1/19)	
38mm <sup>2</sup> ×3C 2.02kg/m φ 32	78-TMX200 (i=1/15)	78-TMX200 (i=1/15)	78-TMX200 (i=1/15)	78-TMX200 (i=1/19)	89-TME400 (i=1/16)	
38mm <sup>2</sup> ×4C 2.55kg/m φ 35	78-TMX200 (i=1/15)	78-TMX200 (i=1/15)	79-TMX200 (i=1/19)	89-TME400 (i=1/16)	810-TME400 (i=1/16)	
60mm <sup>2</sup> ×3C 3.15kg/m φ 39	810-TMX200 (i=1/24)	810-TMX200 (i=1/16)	810-TME400 (i=1/24)	810-TME400 (i=1/20)	810-TME400 (i=1/20)	
100mm <sup>2</sup> ×3C 5.27kg/m φ 50	911-TME400 (i=1/16)	911-TME400 (i=1/25)	911-TME400 (i=1/32)			
100mm <sup>2</sup> ×4C 6.72kg/m φ 56	911-TME400 (i=1/25)	911-TME400 (i=1/32)				



NOTE: 1. Calculated at following conditions:

- ① Cable type 2PNCT ② Applications Stationary application /Vertical lift, Mobile application /Vertical lift ③ Maximum travel/lift speed less than 30mm/min ④ Extensions 3m
2. Mass of accessories are not included
3. Deviations due to wind load, tidal current, buoyancy, low ambient temperature, etc. are not calculated. When selecting a model, please take into consideration of harsh environment conditions.
4. Suffix -R on all model names identifies reverse winding.
5. For any special requirements, please contact us.

Stationary application /Vertical retrieve				
110m	120m	130m	140m	150m
7M9-TMX100 (i=1/15)	79-TMX100 (i=1/15)	79-TMX100 (i=1/15)	79-TMX100 (i=1/15)	7A9-TMX100 (i=1/15)
79-TMX100 (i=1/15)	79-TMX100 (i=1/15)	79-TMX100 (i=1/15)	8M10-TMX100 (i=1/15)	8M10-TMX100 (i=1/15)
8M10-TMX100 (i=1/15)	8M10-TMX100 (i=1/15)	8M10-TMX100 (i=1/15)	810-TMX100 (i=1/15)	810-TMX100 (i=1/15)
810-TMX100 (i=1/15)	811-TMX100 (i=1/15)	811-TMX100 (i=1/15)	811-TMX100 (i=1/15)	811-TMX100 (i=1/15)
810-TMX100 (i=1/15)	811-TMX100 (i=1/15)	811-TMX100 (i=1/15)	811-TMX100 (i=1/15)	811-TMX100 (i=1/15)
811-TMX100 (i=1/15)	811-TMX100 (i=1/15)	812-TMX200 (i=1/15)	812-TMX200 (i=1/15)	812-TMX200 (i=1/15)
811-TMX100 (i=1/15)	812-TMX200 (i=1/15)	812-TMX200 (i=1/15)	812-TMX200 (i=1/15)	812-TMX200 (i=1/15)
812-TMX200 (i=1/15)	812-TMX200 (i=1/15)	913-TMX200 (i=1/19)	913-TMX200 (i=1/19)	913-TMX200 (i=1/19)
913-TMX200 (i=1/19)	913-TMX200 (i=1/19)	914-TMX200 (i=1/24)	914-TMX200 (i=1/24)	914-TMX200 (i=1/24)
914-TME200 (i=1/25)	914-TME200 (i=1/25)			
1014-TME400 (i=1/20)				

Mobile application /Vertical lift		
35m	40m	45m
56-TMX100 (i=1/15)	67-TMX100 (i=1/15)	67-TMX100 (i=1/15)
67-TMX100 (i=1/15)	67-TMX100 (i=1/19)	78-TMX200 (i=1/19)
78-TMX200 (i=1/15)	78-TMX200 (i=1/15)	78-TMX200 (i=1/15)
78-TMX200 (i=1/15)	78-TMX200 (i=1/15)	78-TMX200 (i=1/15)
78-TMX200 (i=1/15)	79-TMX200 (i=1/15)	810-TME400 (i=1/16)
89-TME400 (i=1/16)	89-TME400 (i=1/16)	810-TME400 (i=1/16)
810-TME400 (i=1/16)	810-TME400 (i=1/16)	810-TME400 (i=1/20)
810-TME400 (i=1/16)	810-TME400 (i=1/25)	810-TME400 (i=1/25)

